

MISSION STATEMENT:

LSS/NCA WALKS WITH THOSE IN NEED AND MOBILIZES COMMUNITY PARTNERS TO PROVIDE SERVICES THAT OFFER HOPE AND REBUILD LIVES.

RESPECT

TO GIVE THE HIGHEST REGARD TO THE DIGNITY OF THE WHOLE PERSON

QUALITY

TO UPHOLD THE HIGHEST STANDARDS IN OUR FIELDS AND TO BE ACCOUNTABLE TO OUR CLIENTS, STAFF AND PARTNERS

INTEGRITY

TO BE HONEST IN OUR RELATIONSHIPS, TRUE TO OUR MISSION IN WORDS AND DEEDS AND TO BE THE BEST STEWARDS OF OUR RESOURCES

INCLUSION

TO ASSEMBLE, VALUE, AND LEARN FROM THE UNIQUE PERSPECTIVES OF DIVERSE INDIVIDUALS AND PARTNERS

EMPOWERMENT

TO BE FACILITATORS IN BUILDING THE CAPACITY OF OUR CLIENTS, STAFF AND THE ORGANIZATION

CO-SPONSORSHIP

WHO IS A REFUGEE?



Refugee and Immigrant Services

A refugee is someone who...

- is outside of his or her country of nationality or habitual residence;
- has a well-founded fear of persecution because of his or her race, religion, nationality, membership of a particular social group or political opinion;
- is unable or unwilling to avail himself or herself of the protection of that country or to return there for fear of persecution.

Where are refugees coming from?



What challenges do refugees face?



Waiting
in refugee camps
set up by
UNHCR



**Voluntary
Repatriation**
to country of origin

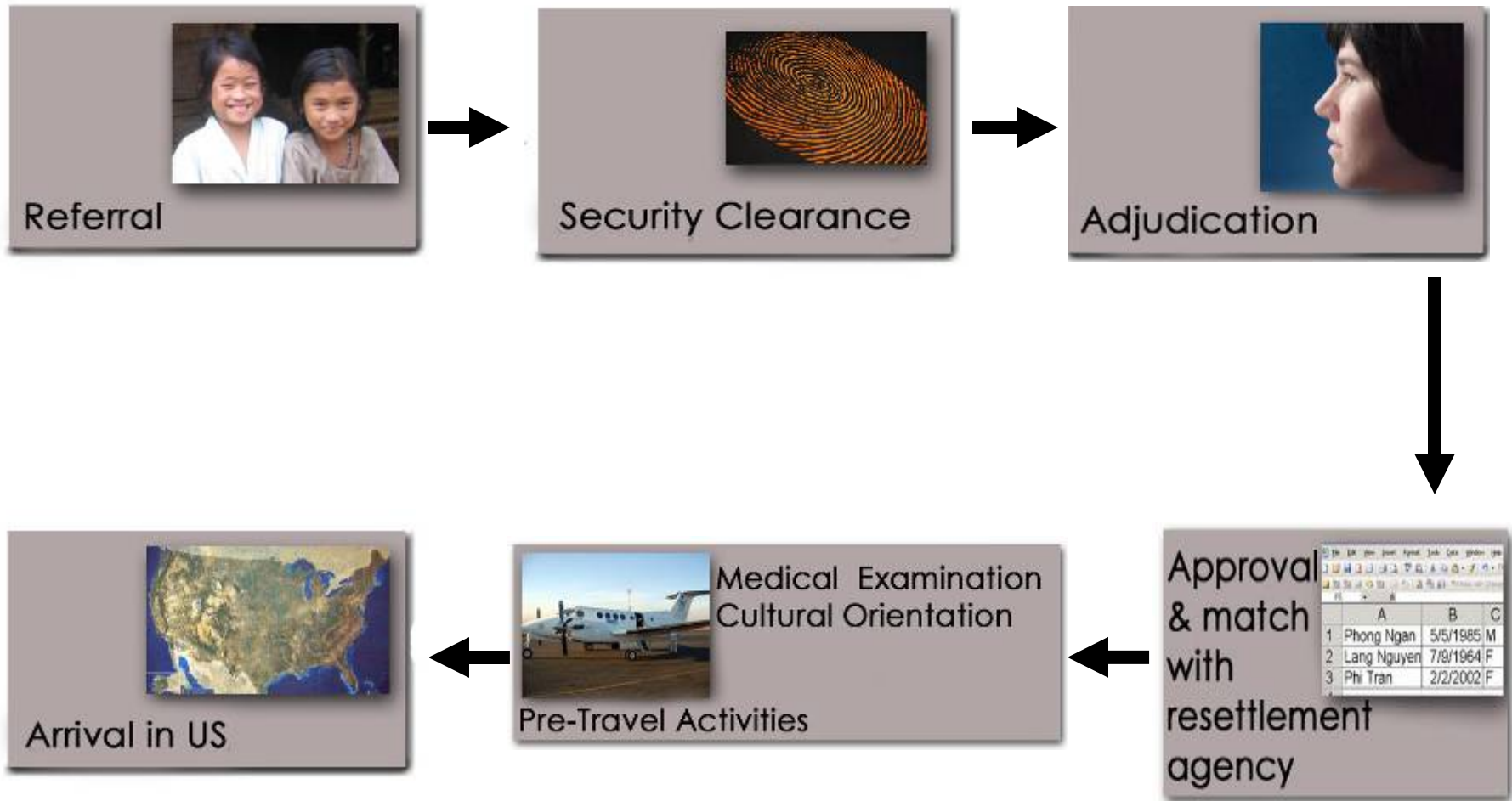


**Refugee
Status in 2nd
country**
within geographic
area

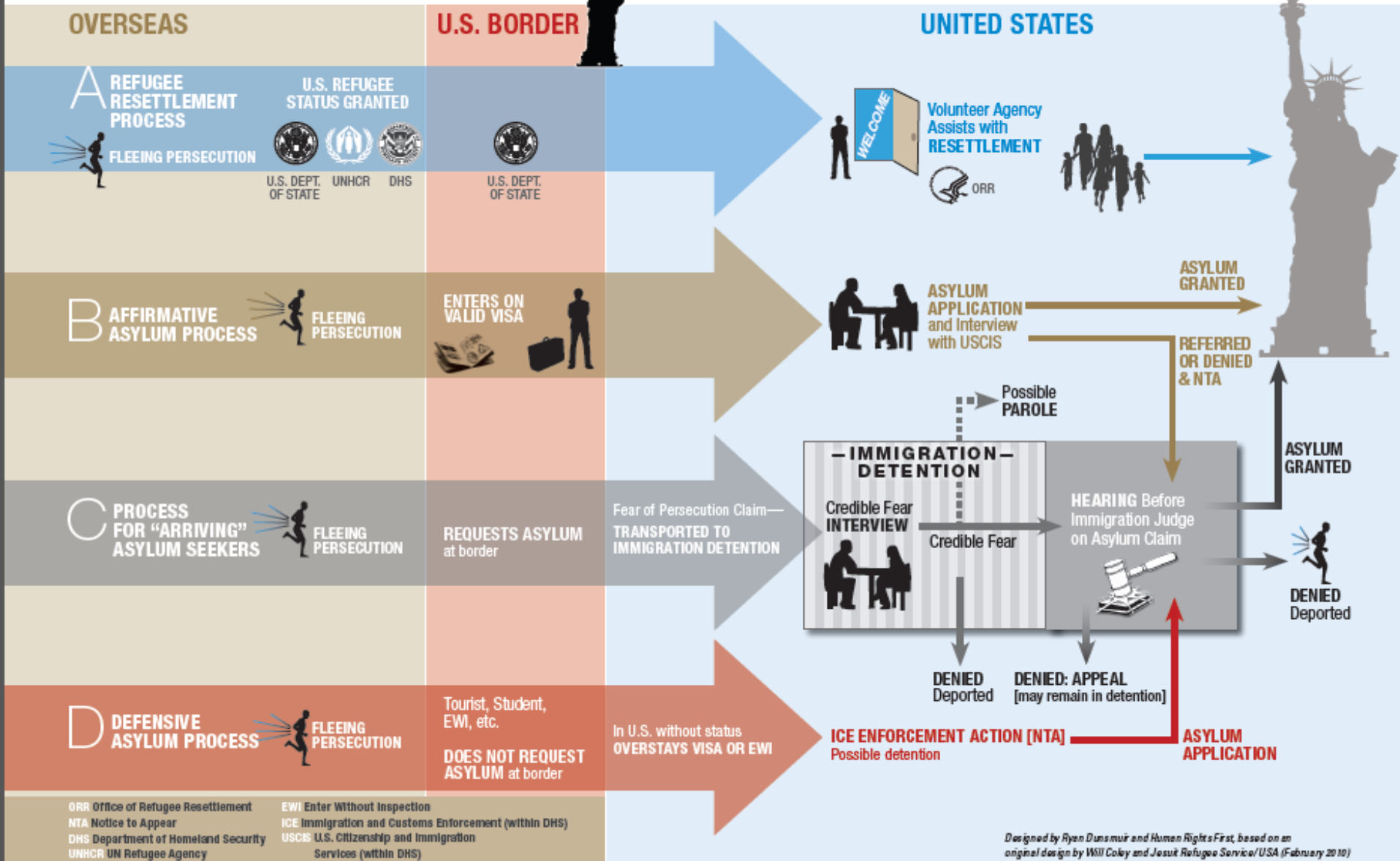


**Resettlement
in 3rd country**
less than 1%

Refugee Resettlement Process



How Refugees Get to the U.S.



Local Refugee Statistics

- * On average, the US accepts **70,000** refugees for permanent resettlement annually. In FY16, the U.S. will welcome 85,000 refugees,
- * Refugees make up about **10%** of the immigration to the US in a year
- * Refugees versus Asylees, SIVs – local numbers. *(Refer to FAQs and glossary in the co-sponsorship packet.)*



For more information

Jessica Cuellar, Volunteer Coordinator and Resource Developer
cuellarj@lssnca.org